



# Neighboring Authority Links

Cloud Amber's vision is to provide products that enable Traffic Managers to model, monitor and control the environmental effects of travel as well as reducing congestion to maximise the use of a limited road network. Cloud Amber believes that the fullest dataset possible with constantly revised models for the journey will provide the most accurate, reliable information ensuring that motorists are not directed down roads that are closed or congested.

## Key features and benefits:

- Share information with neighbouring authorities
- Share control room and supervision functions, saving revenue
- Allow contributions and buy in from neighbours
- Increase data accuracy and data quality
- Fully secure

## Cloud Amber

2 Temple Quay  
Temple Back East  
Bristol  
BS1 6DZ  
United Kingdom

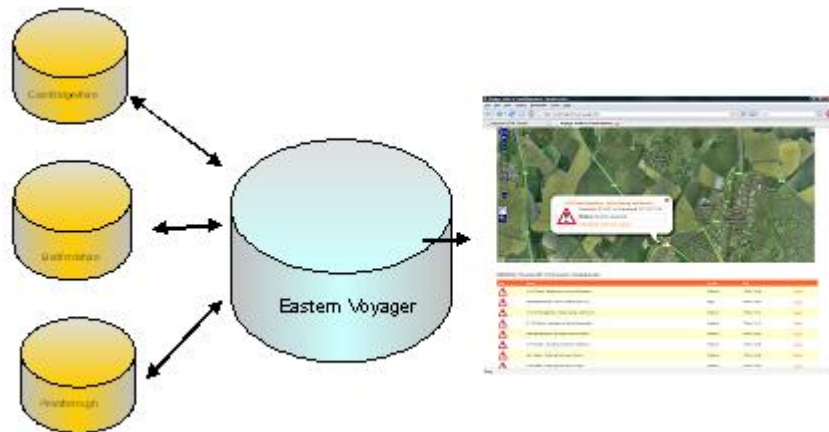
E-mail: [sales@cloudamber.com](mailto:sales@cloudamber.com)  
Web: [www.cloudamber.com](http://www.cloudamber.com)

Ver: Neighboring Authority Links Issue 1

**Cloud**  
Unified Transport Management Control

### Key benefits:

- Share information with neighbouring authorities
- Share control room and supervision functions, saving revenue
- Allow contributions and buy in from neighbours
- Increase data accuracy and data quality
- Fully secure



### Key features:

- Provides full overview
- Available through any internet terminal
- Allow full, limited or read only access
- Control VMS signs and other equipment cross boundary

### Example implementations:



### Technical specification:

- Fully UTMC compliant
- Connections with all UTMC suppliers guaranteed
- 100% integrated & hosted solution
- Local deployments available