



# Dynamic Maps

Cloud Amber's vision is to provide products that enable Traffic Managers to model, monitor and control the environmental effects of travel as well as reducing congestion to maximise the use of a limited road network. Cloud Amber aims to provide the most understandable and most relevant traffic and transport map available on the market. Cloud Amber user-tailored maps will display only the features that are relevant to the user and easily integrates in to all existing GIS systems.

Key features and benefits:

- Full integration with corporate GIS systems
- Display pollution, congestion / roadworks, gritting routes, pollen count, cycle and ramblers maps
- Low bridges, Accessibility routes, walking routes, dodgy paths at night
- Freight information to include low bridges and narrow roads
- Any other map layers

## Cloud Amber

2 Temple Quay  
Temple Back East  
Bristol  
BS1 6DZ  
United Kingdom

E-mail: [sales@cloudamber.com](mailto:sales@cloudamber.com)  
Web: [www.cloudamber.com](http://www.cloudamber.com)

Ver: Dynamic Maps Issue 1

**Cloud**  
Unified Transport Management Control

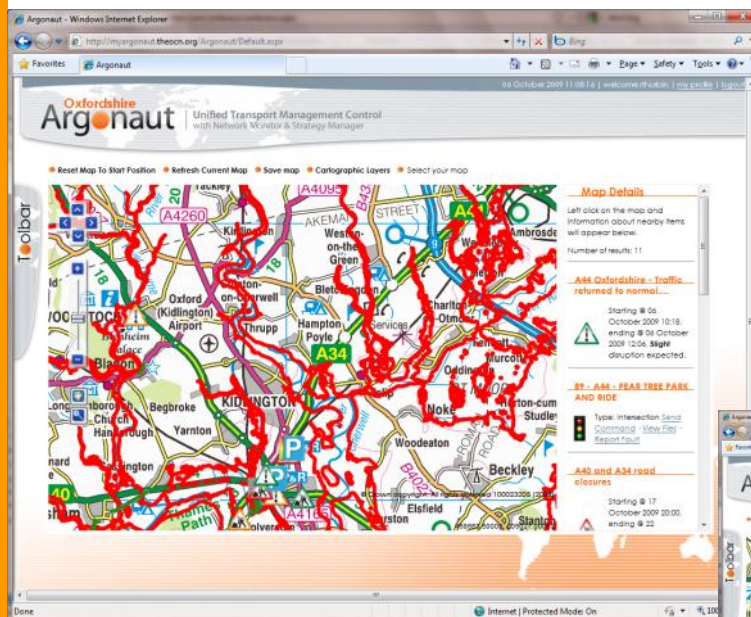
### Key benefits:

- Emphasis of general places of interest and attractions
- Emphasis of transport destinations or interchanges
- Emphasis of ticket purchasing points, cash machines, petrol stations, service areas, bike racks and other transport related places of interest
- Emphasis of allowed routes and possibilities
- Emphasis of disruption information and alternatives based on future or predicted data
- Overlaying journey instructions and other directional information
- Representation of smog, areas of pollution, rain, ice, snow and other wide area related information
- De-emphasis of other irrelevant information



### Key features:

- Full integration with corporate GIS systems
- Print out maps - show times of day the pollution, congestion / roadworks
- Gritting routes
- Pollen Count coloured maps
- Cycle and ramblers maps
- Low bridges, Accessibility routes, walking routes, dodgy paths at night
- Freight information to include low bridges and narrow roads
- Any other map layers



### Technical specification:

- 100% integrated & hosted solution or locally deployed
- W3C XHTML and WAI AA compliant