



# Journey Times Engine

The Cloud Amber Journey Time Engine's unique algorithm can take the ANPR data, Journey Time data from SCOOT, detectors, bus AVL, TIH and Historical Files and any other relevant feed and calculates the complete route journey time and average speed. All an operator needs to do to execute a new transport route is to draw a line using the cursor along the roads for which he wishes the Journey Times Engine to make the calculation.

Key features and benefits:

- **No scripting, programming or prior technical knowledge required**
- No specialised skills required
- Infinitely flexible solution
- Provides best value from existing infrastructure
- Stable and reliable solution
- Fully secure
- Fully UTMCC compliant

## Cloud Amber

2 Temple Quay  
Temple Back East  
Bristol  
BS1 6DZ  
United Kingdom

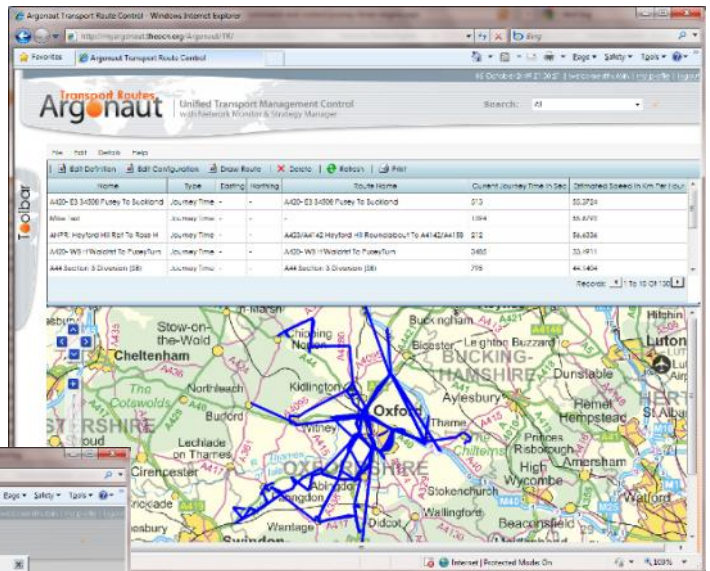
E-mail: [sales@cloudamber.com](mailto:sales@cloudamber.com)  
Web: [www.cloudamber.com](http://www.cloudamber.com)

Ver: Argonaut Issue 1

**Cloud**  
Unified Transport Management Control

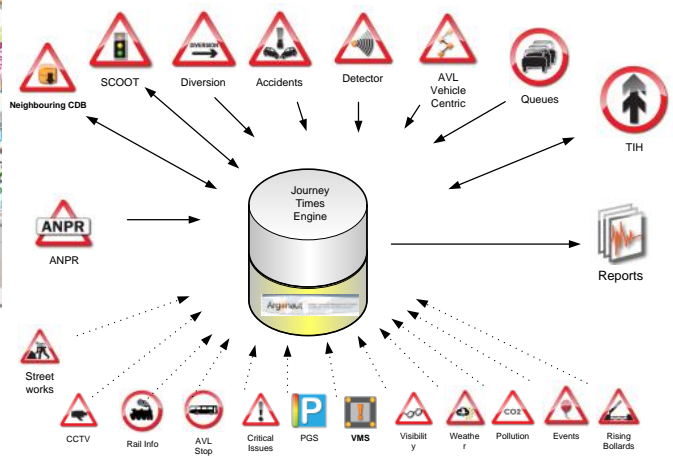
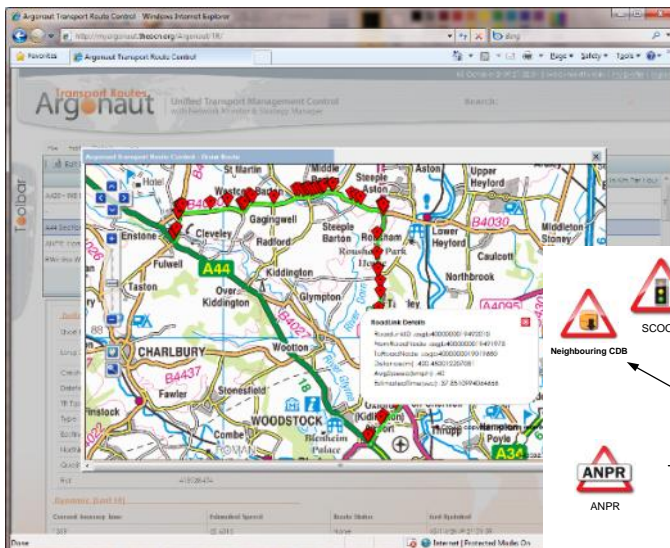
## Key benefits:

- No specialised skills required
- Infinitely flexible solution
- Provides best value from existing infrastructure
- Stable and reliable solution
- Fully integrated technical solution



## Key features:

- Integrates all existing and new data sources
- Full support for ANPR, Highways Agency, bus, truck and other data
- Engineers draw facility
- Instant journey times calculation
- Prediction support for entire journey length
- Additional advanced but highly secret features!



## Technical specification:

- 100% integrated & hosted solution
- Local deployments available
- Utilises Ordnance Survey Geographical Markup Language data